

# FOSTER LAKE FIELD DAY

## ITINERARY

~ 4 PM: ARRIVE AT FOSTER LAKE,

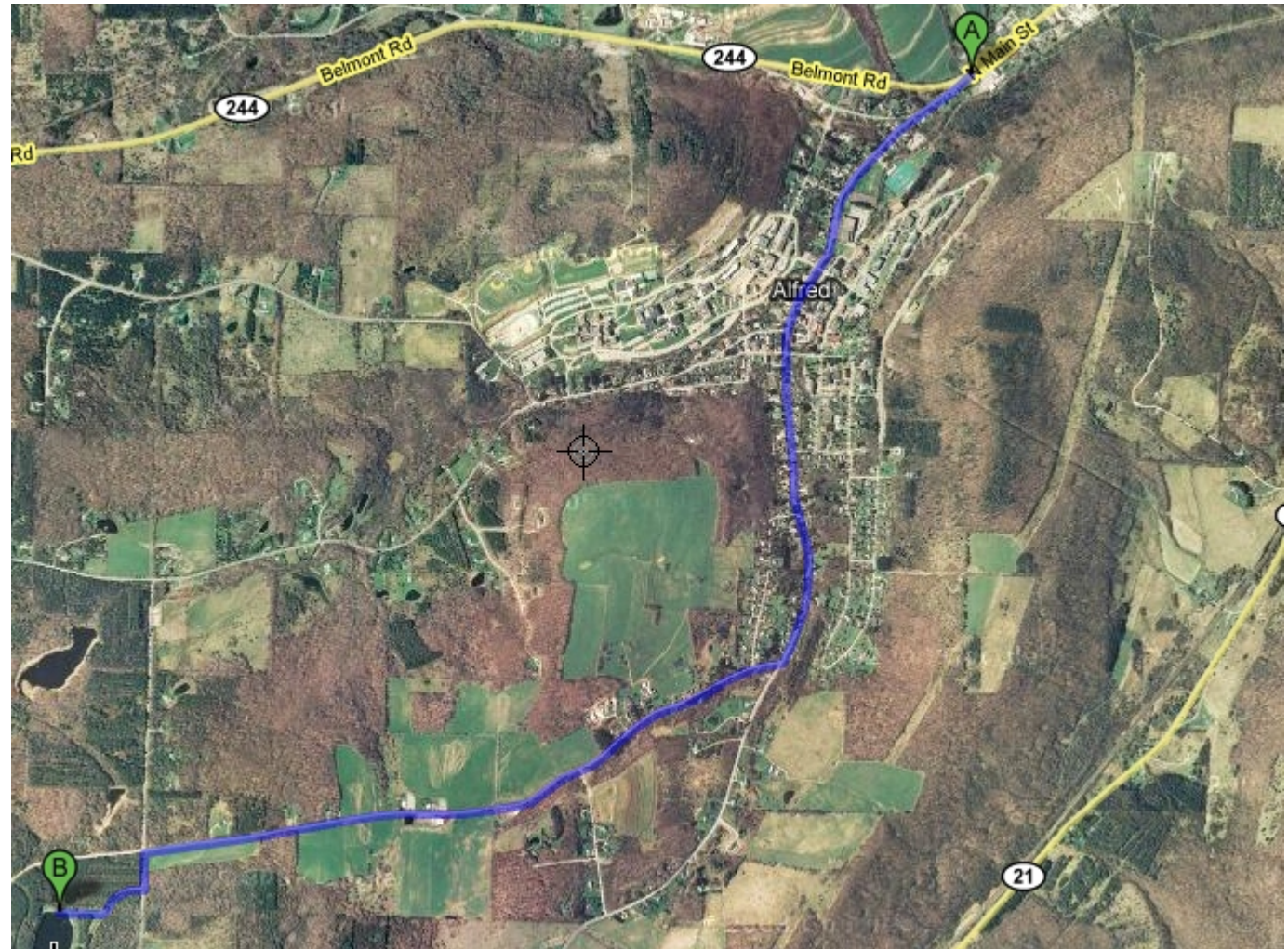
4-5PM: FROLIC AT TH LAKE, COLLECT  
SAMPLES

5.10PM: RE LOAD BUS, HEAD TO AU (NEXT  
MAP)

5.10-6.10: EXAMINE SPECIMINS IN THE BIO  
LAB

~6.10: EAT DINNER AT ADE

~6.40 DEPART AU



## DIRECTIONS TO FOSTER LAKE

FROM RT. 244

TURN RIGHT ON MAIN ST. FOR ABOUT 1.5 MILES  
TURN RIGHT ON SPRAUGE RD FOR ABOUT 1.5 MILES  
TURN LEFT ON FOSTER LAKE RD. FOR 450'  
TURN RIGHT AT SIGN 'ACCESS PASS REQUIRED'

**REMIND KIDS**  
**TO DRESS APPROPRIATELY!**