

TRUSTEES

Dr. Gene M. Bernstein, Chairman
AU Alumnus, 1969

Michele R. Cohen
Cohen & Steers Capital Management

Robert B. Daggett
Chairman, Smethport Specialty Company
AU Alumnus, 1981

Dr. Ruth H. Scott
Scott Associates – Consultants
Honorary AU Alumna, 1997

PARENT

Christine P. Kulp
Owner, Organization Support Services
Co-Chair Parents Association and Vice Chair of the Alumni Council
AU Alumna, 1971

FACULTY AND STAFF

Andrea Gill
Associate Professor in Ceramics

Dr. Thomas V. Peterson
Professor of Religion

Dr. Susan Strong
Vice President for Enrollment Management and Associate Provost

Jean E. Poplawski
Secretary, Career Development Center
Support to the Committee

**Greek Systems
Summary, 2002**

CHRONOLOGICAL SUMMARY

School	Greeks?	%	National /Local	House Ownership	Residency Requirement	Sophs In House	Alcohol on- Campus
Williams	Abolished 1962	[50-75%]	-	College	4 years	-	Yes
Colby	Abolished 1984	[33% men]	-	College	4 years	-	Yes
Middlebury	Converted 1992	[20%]	Mix	College	4 years	?	Yes
Hamilton	Converted 1995	30-35%	National/ local sors	College	4 years	n/a – Block Housing	Yes
Bowdoin	Abolished 1997	[27%]	-	College	2 years, but very few off campus	-	Yes
Union	Reform 2001	35%	National	College	4 years	No	Yes
Lawrence	Reform 2001	6%	National	College	4 years	Yes	Yes
Colgate	Review 2001-02	39%	National	Frats	4 years	No	Under review
Alfred SC	Yes	2%	Local	Frats.	2 years	Yes	No
Bucknell	Reform path	40-45%	National	College/No sor. houses	4 years	Limited/ 2 nd sem only	Yes
Clarkson	Yes	15%	National/ 3 local	Frats./may change	4 years	Limited/ 3.0 sem GPA	Yes
Dartmouth	Yes	35%	Mix	Mix	1 st & 4 th yr.	No	Under review

**Greek Systems
Summary, 2002**

CHRONOLOGICAL SUMMARY

School	Greeks?	%	National /Local	House Ownership	Residency Requirement	Sophs In House	Alcohol on- Campus
Dickinson	Yes	20%	National	College	4 years	Yes	Yes
Franklin & Marshall	Dropped Recognition	25%	National	Frats.	2 years	No	Yes
Gettysburg	Yes	47%	National	Mix/No sor. houses	4 years	Limited	Yes
Hartwick	Yes	17%	Mix	Mostly College	3 years	No	Yes, but rare FIPG for Greeks
Hobart/WS	Yes	20% men	National	College	4 years	No	Yes
Ithaca	No	-	-	-	3 years	-	Yes, but rare
St. Lawrence	Yes	23%	National/ 3 locals	Mostly College	4 years	Limited/ 2 nd sem	Yes
Wesleyan	Yes	7%	National	Mix/College Controlled	4 years	Yes	Yes

[Brackets] = % at time of abolition or conversion; No brackets = % currently

- 1) Reports on Greek Life and/or interviews with campus officials from the following institutions:

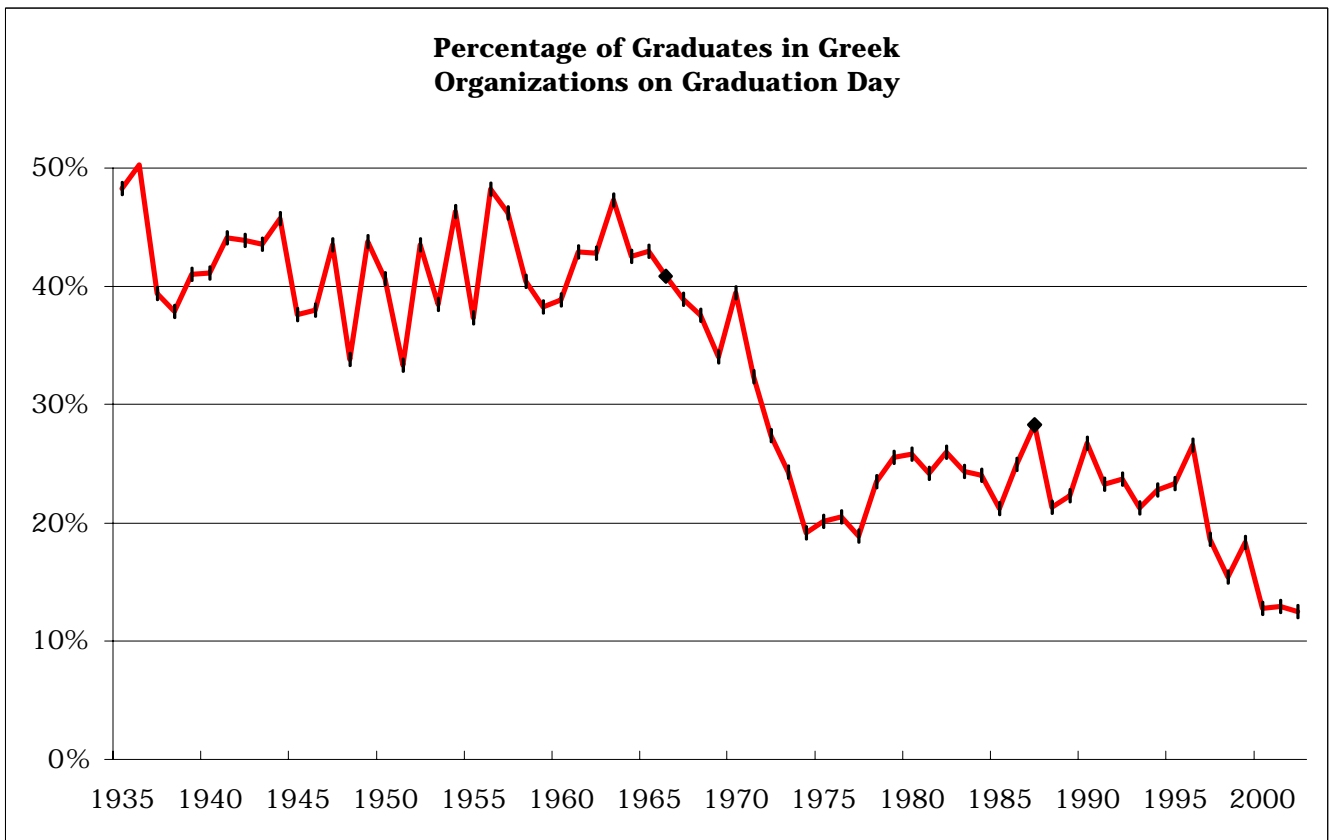
Alfred State College
Bowdoin College
Bucknell University
Clarkson University
Colby College
Colgate University
Dartmouth College
Dickinson College
Franklin & Marshall College
Gettysburg College
Hamilton College
Hartwick College
Hobart & William Smith Colleges
Ithaca College
Lawrence University
Middlebury College
St. Lawrence University
Union College
Wesleyan University
Williams College

- 2) Reports from the Vice President of Student Affairs/Dean of Students

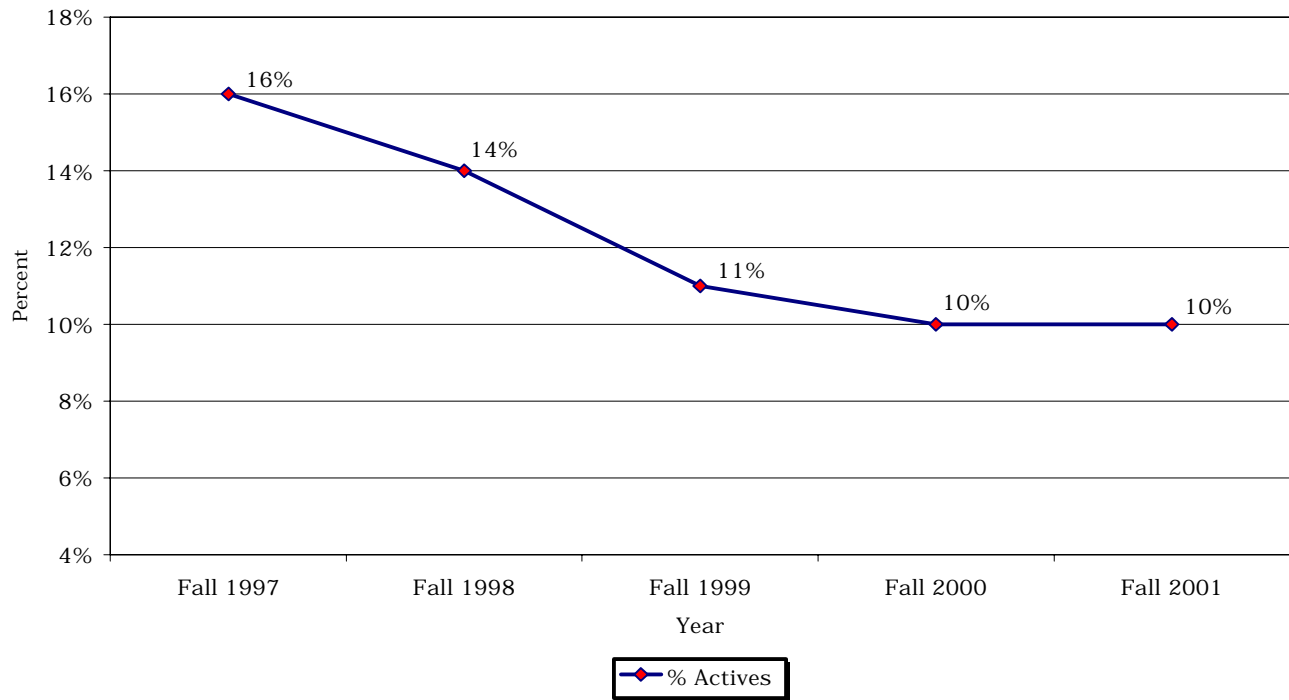
- History of membership in Greek houses as a percentage of all students
- Number of Greeks by house since 1965/number of Greeks by college (2001)
- Greek grade point average (G.P.A.) vs. All University, 1993 – 2001
- 1994 Honors Thesis by Keith Andrew Bellomo entitled “The History of Fraternities and Sororities at Alfred”
- Historical discussions of fraternities/sororities:
 - December, 1899 – “The Alfred University Monthly,” pp 119-120.
 - May, 1907 – “What Fraternities do for a College,” pp 213-216.
 - 1970 Fraternity Code Revision (amending original code of 2/26/65), with article about it in the “Alfred News,” 1965, pp 8-9.
 - “College Fraternities: Their Origin, Purpose and Value,” published by the National Interfraternity Conference, 1935.
- Documented and undocumented incidents of harassment and intimidation of students who have de-pledged.
- Survey of incoming freshman interest in various activities (including Greek life) – AU vs. national data, 1972 – 2001

- 3) Summary of judicial records of Greek houses, 1993 – present
- 4) Summary of judicial records of all AU students
- 5) Recent major initiatives to improve Greek system:
 - Greek Life Project, 1992
 - Greek Life Benchmarks, created 1994 (revised 1996)
 - Greek Life Relational Statement, 1999
 - Greek Life Code of Pride, 1999 (replacing 1996 Benchmarks)
 - Additional policies and procedures for fraternal organizations
 - Alfred University Greek Judicial System
 - Alfred University Greek Life Community Social Management Policy
 - Greek Life Training and Leadership Programs
 - Examples of Greek community services
- 6) Core Institute (an organization that assists higher education in drug and alcohol prevention efforts) National Survey (1997 and 2001). Drinking among special groups (i.e., Greeks, athletes, student government, minorities, etc.) – Greeks vs. All AU vs. national
- 7) Local advisor and housing corporations associated with each Greek chapter
- 8) Letters and e-mails
- 9) Interviews/Discussions with:
 - 15 Greek and non-Greek students
 - Alfred Chief of Police
 - 6 AU alumni
 - Village businessman (an AU alumnus)
 - Representative from Alfred Rescue Squad (and AU faculty member)
 - Director of Residence Life, Residence Hall Directors and Residence Assistants
 - Current and former student-athletes
 - Minority students (Afro-American and Latino)
 - Past and current President of the Student Senate
 - President of Student Activities Board
 - Director of Student Activities
 - President of Residence Hall Council
 - InterGreek Council Liaison
 - Director of Athletics
 - Director of Powell Campus Center
 - Director of Safety, Security and Telecommunications
 - Co-President of the Art Union

- Director of Counseling and Student Development Center
 - Director of Crandall Health Center
 - 8 Greek Presidents
 - Vice President of Student Affairs/Dean of Students
 - Vice President of Business and Finance/Treasurer
 - AU legal counsel
 - Director of Admissions
 - Vice President of University Relations
- 10) Report on Greek Alumni financial support
 - 11) 2001 Harvard School of Public Health College Alcohol Study
 - 12) "Greek Life at Alfred: Proud Tradition, Uncertain Future," by Sue Goetschius, "Alfred Magazine," Spring 2002



**Greek Membership
(As percentage of student body)
Alfred University
Fall 1997 - Fall 2001**



Greek Membership

Fall 2001

Fraternities

Alpha Chi Rho	20
Delta Sigma Phi	16
Kappa Psi Upsilon	17
Kappa Sigma	23
Klan Alpine	18
Lambda Chi Alpha	16
Sigma Alpha Mu	9
Zeta Beta Tau	15

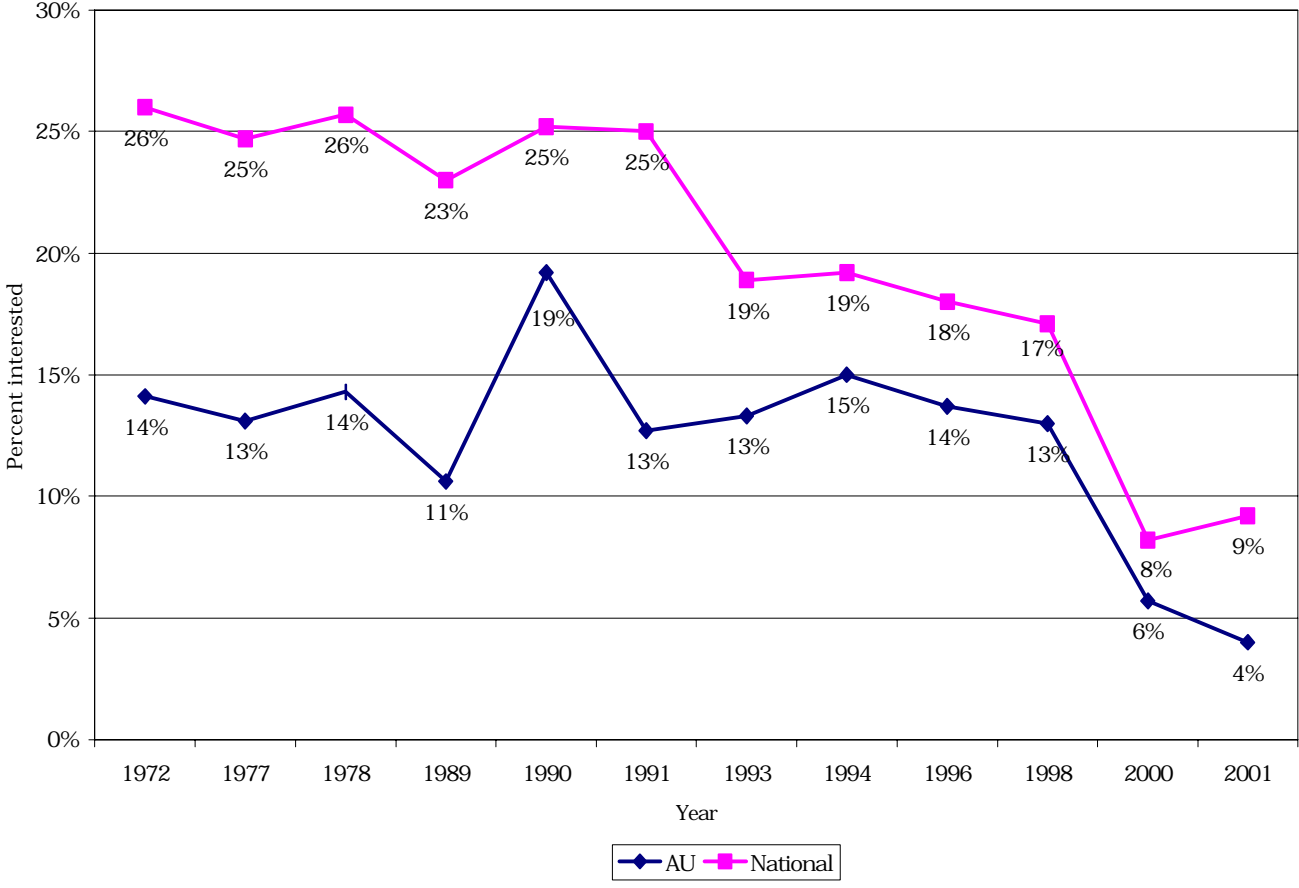
Sororities

Alpha Kappa Omicron	12
Delta Zeta	23
Sigma Chi Nu	24
Theta Theta Chi	15

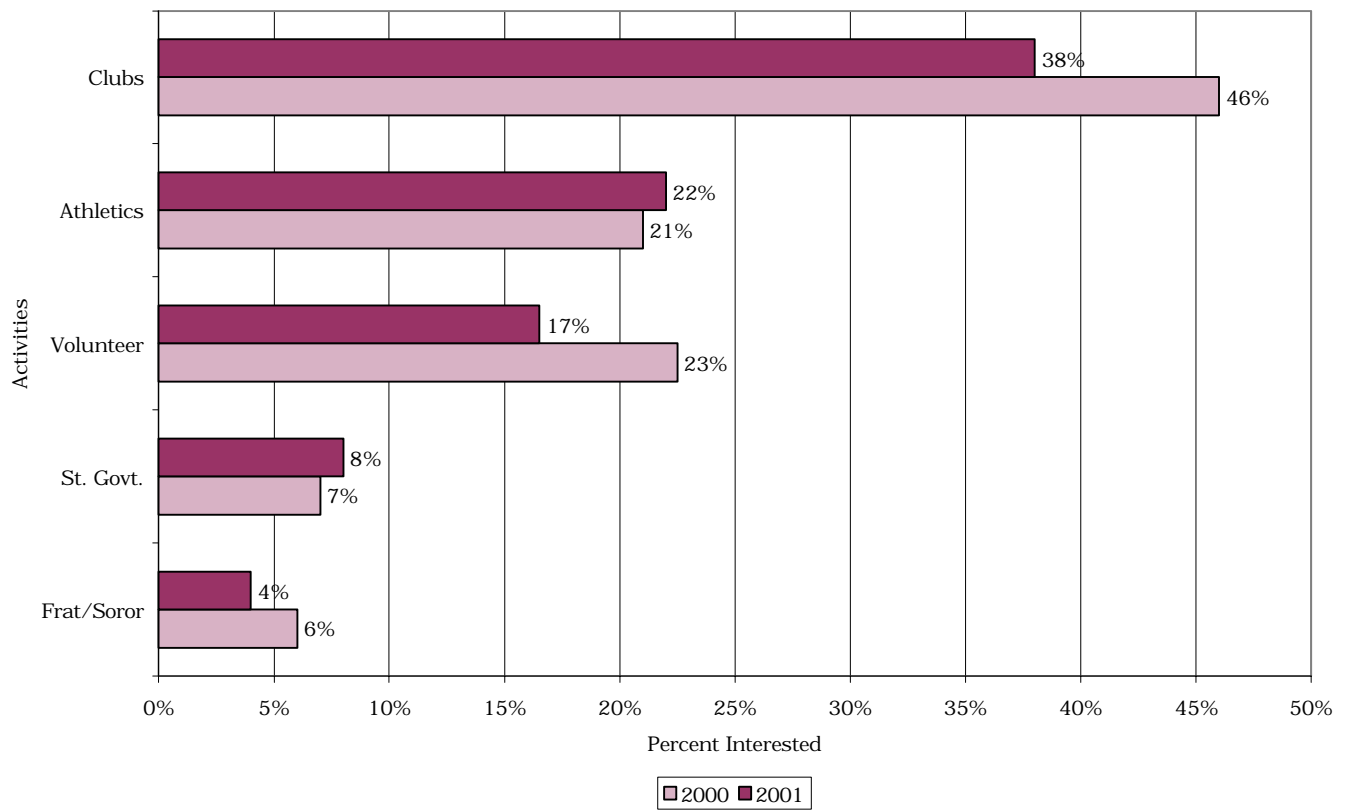
Source: "Academic/Membership Statistics, Fall 2001" report, Office of Student Affairs.

Definition: Active members, Fall 2001, compiled from membership lists submitted by chapter presidents, for currently enrolled students.

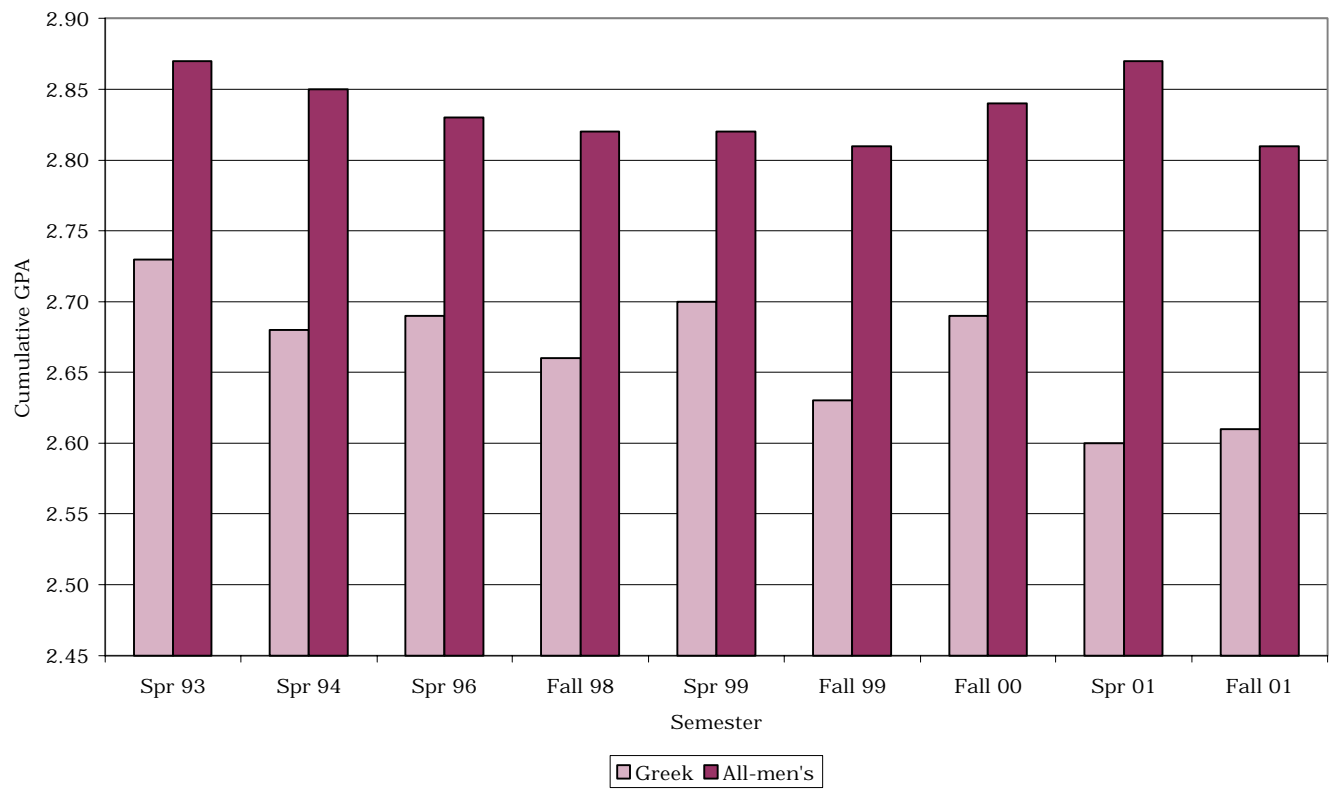
Freshman Interest in Fraternities/Sororities
AU vs. National Data



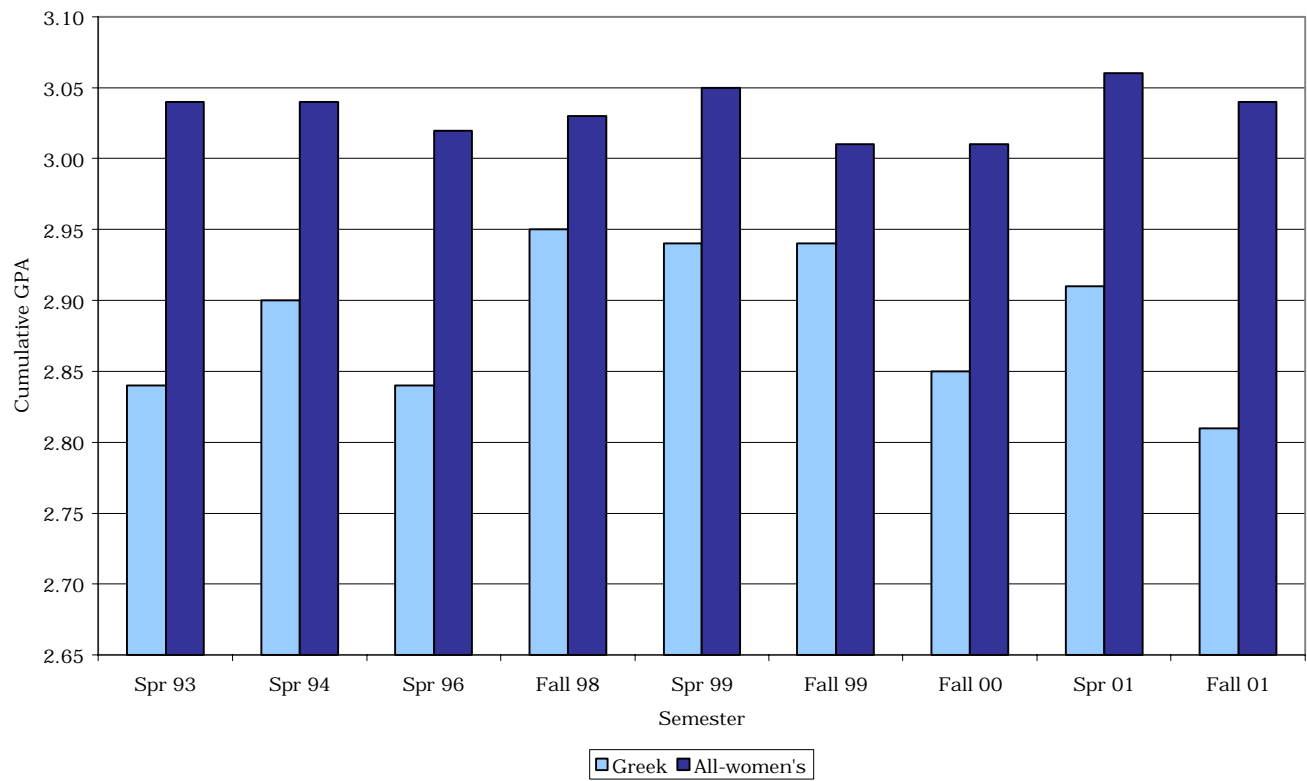
**Freshman Interest in Activities
Alfred University
2000 and 2001**



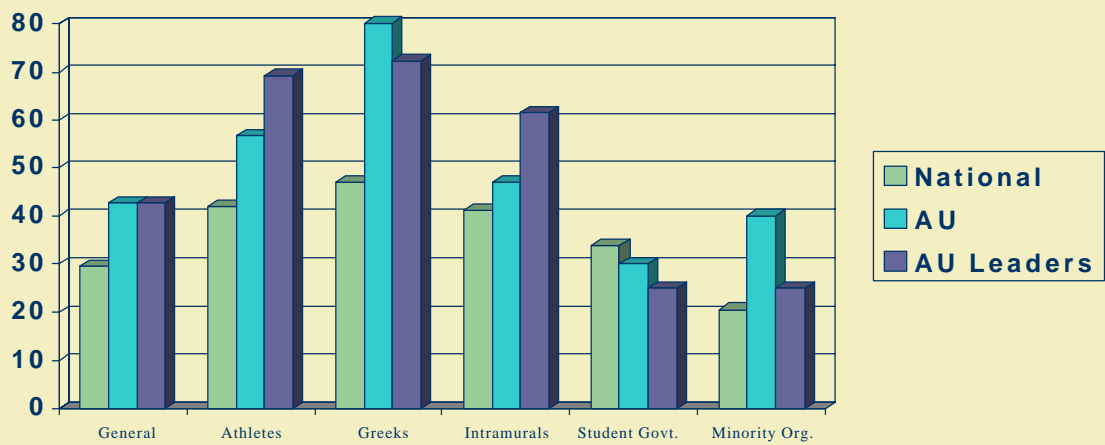
**Men's Cumulative GPA
Greek vs. All-men's Average
1993 - 2001**



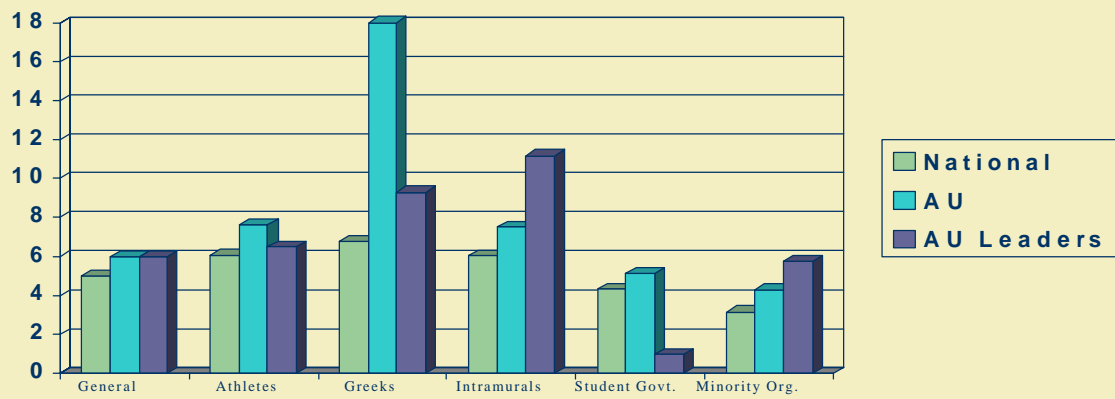
**Women's Cumulative GPA
Greek vs. All-women's Average
1993 - 2001**



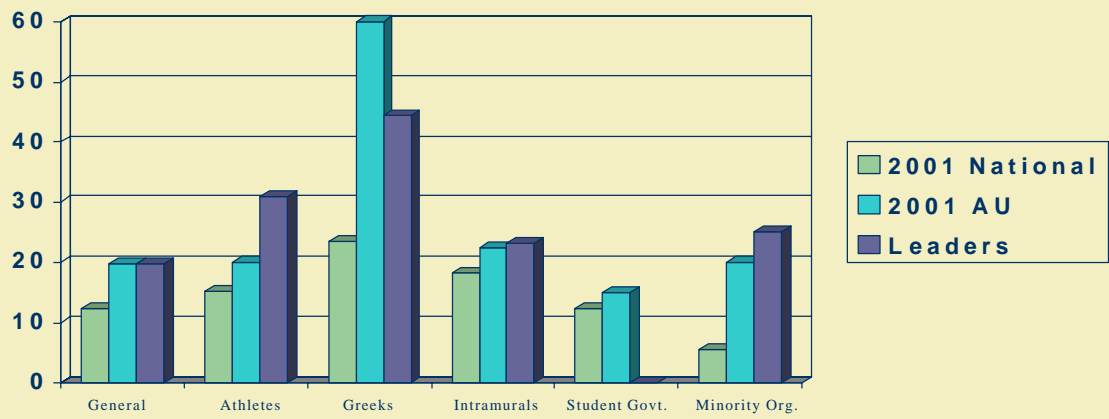
Binged at least twice in the last two weeks



Average Number of Drinks / Week



Classified as heavy and frequent drinkers



PROS AND CONS OF GREEK LIFE

Pros

- 1) Teaches leadership, responsibility, teamwork (27)
- 2) Strong bonds of brotherhood/sisterhood (48)
- 3) Meet people from different majors/classes (16)
- 4) Participate in community service (38)
- 5) Important social outlet/alternative (9)
- 6) Reason to stay instead of transfer (15)
- 7) Increases loyalty to AU (5)
- 8) Emphasizes academics (6)

Cons

- 1) Dehumanizes people through hazing/pledging (20)
- 2) Creates mob/herd/gang mentality-rituals etc. (22)
- 3) Elitist and exclusionary (18)
- 4) Nuisance in neighborhoods
- 5) Encourages excessive drinking/drugs/sex (30)
- 6) Intimidation of de-pledges leads to transfers (3)
- 7) Antithetical to principles of AU (9)
- 8) Houses have libraries of tests & essays (2)

Note: Numbers in parentheses represent how many people (parents, students, alumni & faculty) mentioned each item.